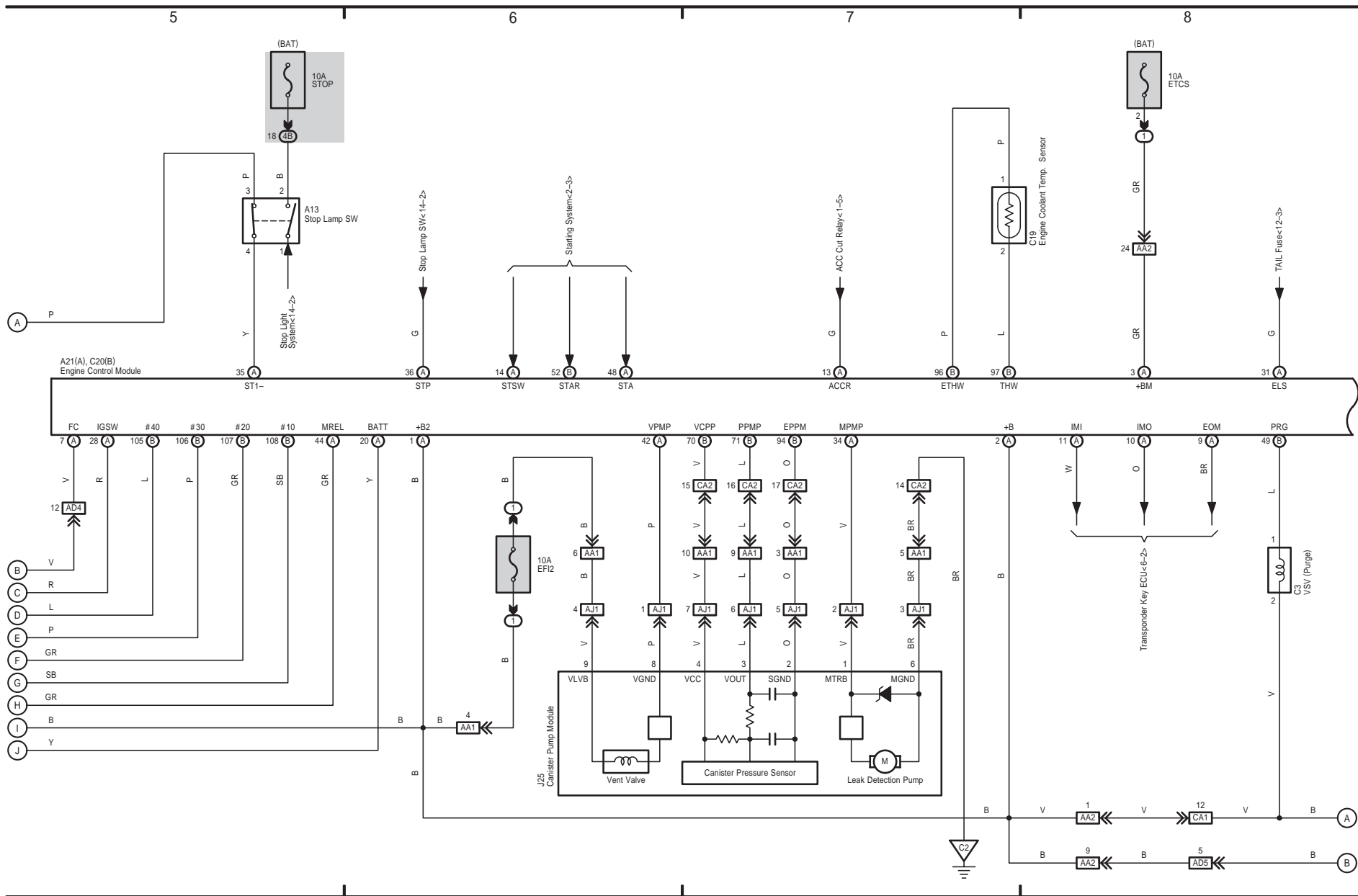


[illegible]

Engine Control



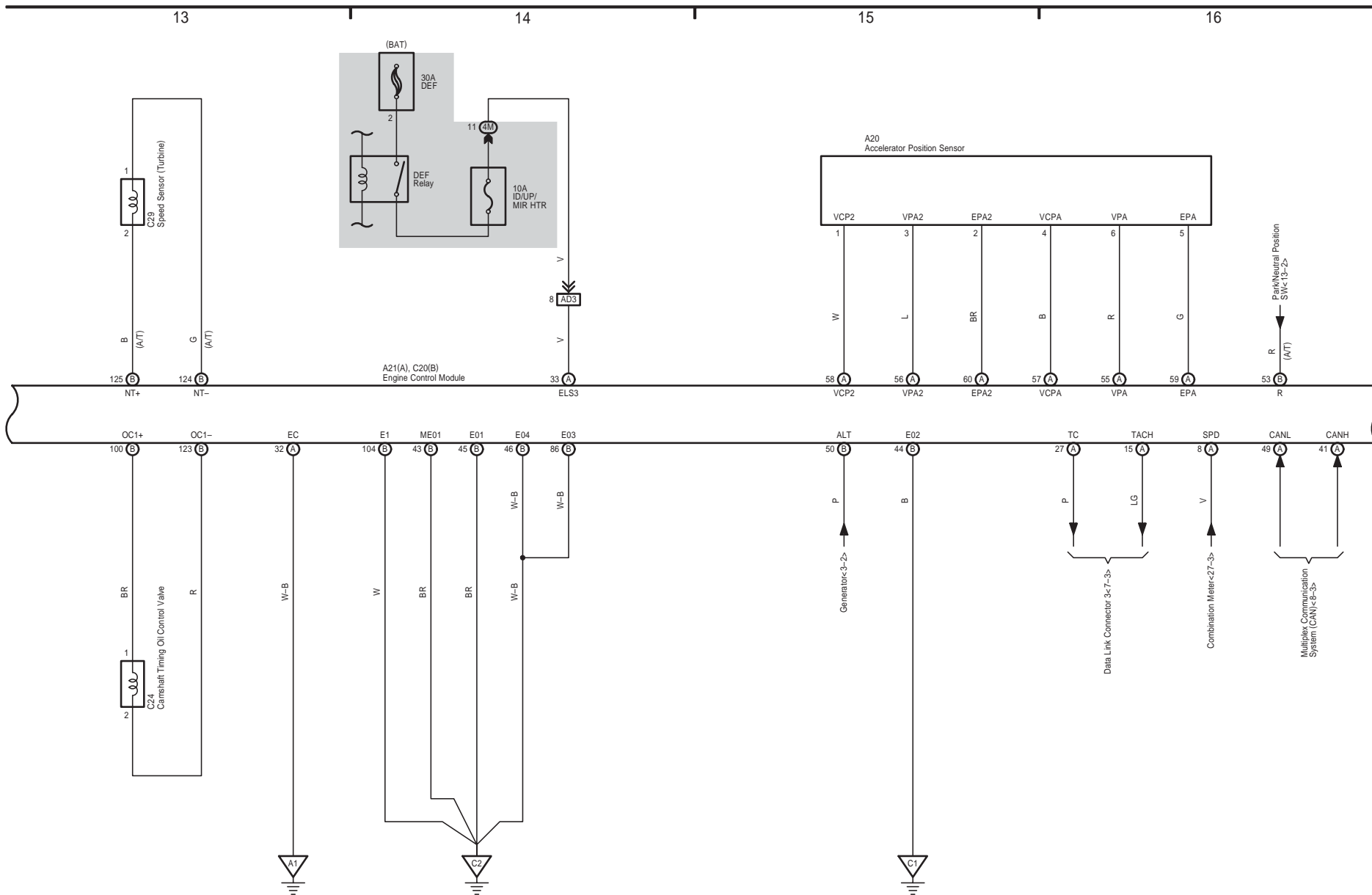
This wiring diagram illustrates the electrical system for the 2006 Ford F-150 3.5L Powerstroke Diesel engine. It shows the connections between various sensors and actuators and the Engine Control Module (ECM).

**Key Components and Connections:**

- Throttle Body Assembly (C17):** Connected to the ECM (A21(A), C20(B)) via wires E2, VC, VTA, VTA2, M+, and M-. The assembly also includes a throttle cable (V) and a throttle position sensor (W).
- Engine Control Module (ECM):** The central control unit, connected to various sensors and actuators. It includes a ground connection (BR) and a power connection (A21(A), C20(B)).
- Mass Air Flow Meter (C26):** Connected to the ECM via wires THA, E2G, VG, and ETHA. It includes a throttle cable (V) and a throttle position sensor (W).
- Air Fuel Ratio Sensor (C23):** Connected to the ECM via wires HA1A, A1A-, and A1A+.
- Oxygen Sensors (D28):** Bank 1 Sensor 1 (HT1B) and Bank 2 Sensor 1 (OX1B) are connected to the ECM via wires LG, GR, and AD5. They include a throttle cable (V) and a throttle position sensor (W).
- Knock Control Sensor (P1):** Connected to the ECM via wires KNK1 and EKNK.
- Crankshaft Position Sensor (C2):** Connected to the ECM via wires NE+ and NE-.
- Camshaft Position Sensor (C18):** Connected to the ECM via wires G2+ and G2-.
- Ignition Coils:** Connected to the ECM via wires IGT1, IGT2, IGT3, IGT4, and IGF1.
- Fan Relays:** Connected to the ECM via wires FAN and FAN2.

The diagram also shows the ground connections for various components, including the ECM (BR), the Mass Air Flow Meter (B), the Air Fuel Ratio Sensor (B), the Oxygen Sensors (B), the Knock Control Sensor (B), the Crankshaft Position Sensor (B), and the Camshaft Position Sensor (B).

Engine Control



5 YARIS (Cont' d)

